

CLOSING COMMENTS 3-12-10

MAY CORN DOWN 1 AT 3.64 ¼

MAY BEANS DOWN 5 AT 9.25 ½

US DOLLAR DOWN 53 POINTS

APRIL CRUDE DOWN 87 AT 81.24

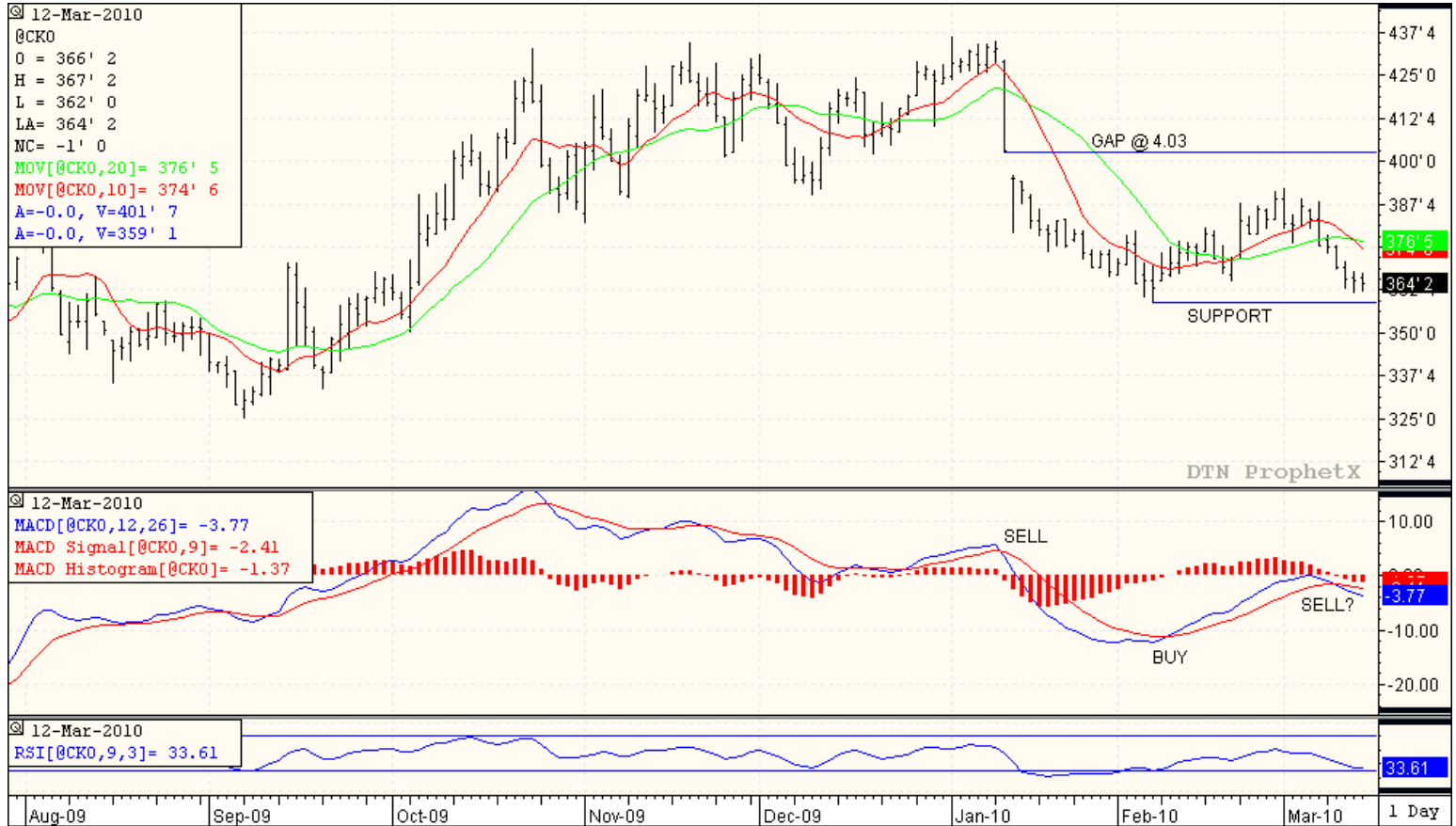
DOW UP 13 POINTS

CORN: The bearish attitude is still in place. Poor exports, weak demand and bad technicals are weighing on the market. With that said, it feels like we may be getting close to a bottom for now. The weather will move to front burner from here on out and it is not very good. Flood forecast for Iowa are scaling up.

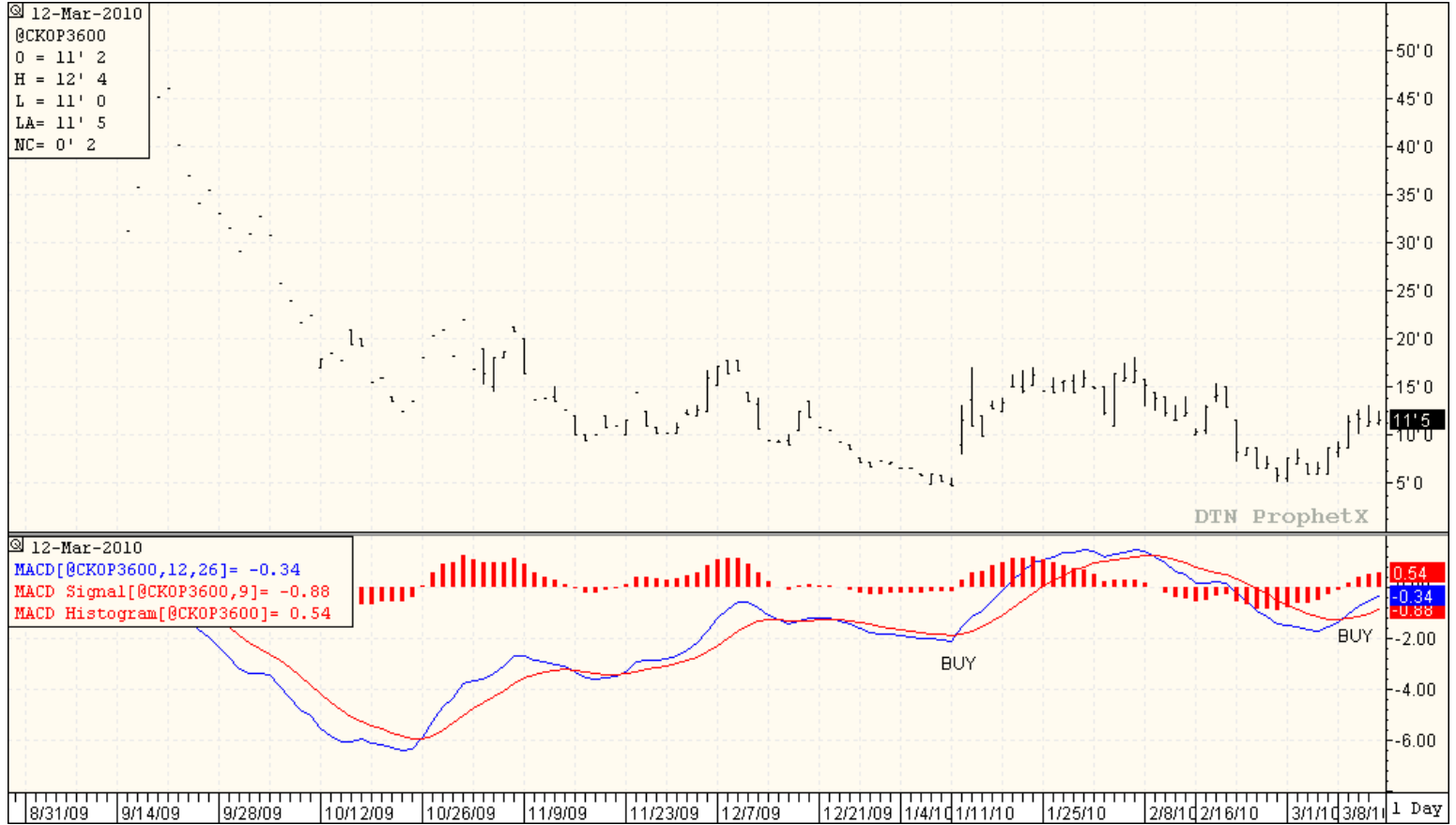
BEANS: The market was a little excited on the open with news that China had bought old crop beans from the US. However, the USDA then announced that it was new crop and that blew the buyers out of the market. The crop in Argentina gets larger everytime you blink. The dollar was very weak today and that usually rallies the commodities. I guess we were lucky that the dollar wasn't 50 points higher; we would have finished the week limit lower.

FYI for every one, Monday the 15th is last day to switch companies or make changes to your crop insurance. Give me a call for help or if you have questions. United Farmers Coop has had a nice increase of new business again this year and I would like to say thank you to all of our new customers and a very big THANK YOU to our loyal old customers.

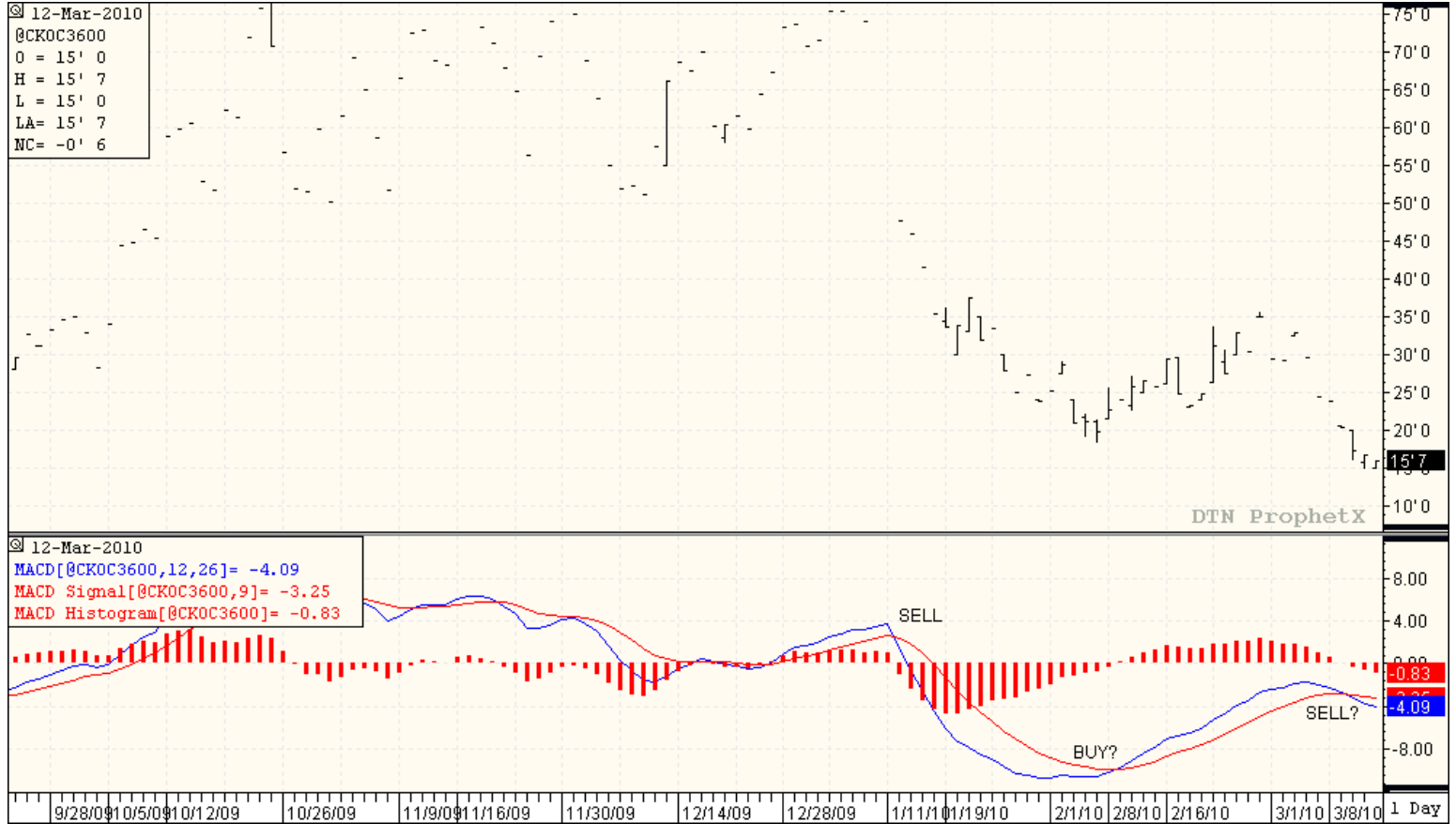
MAY CORN



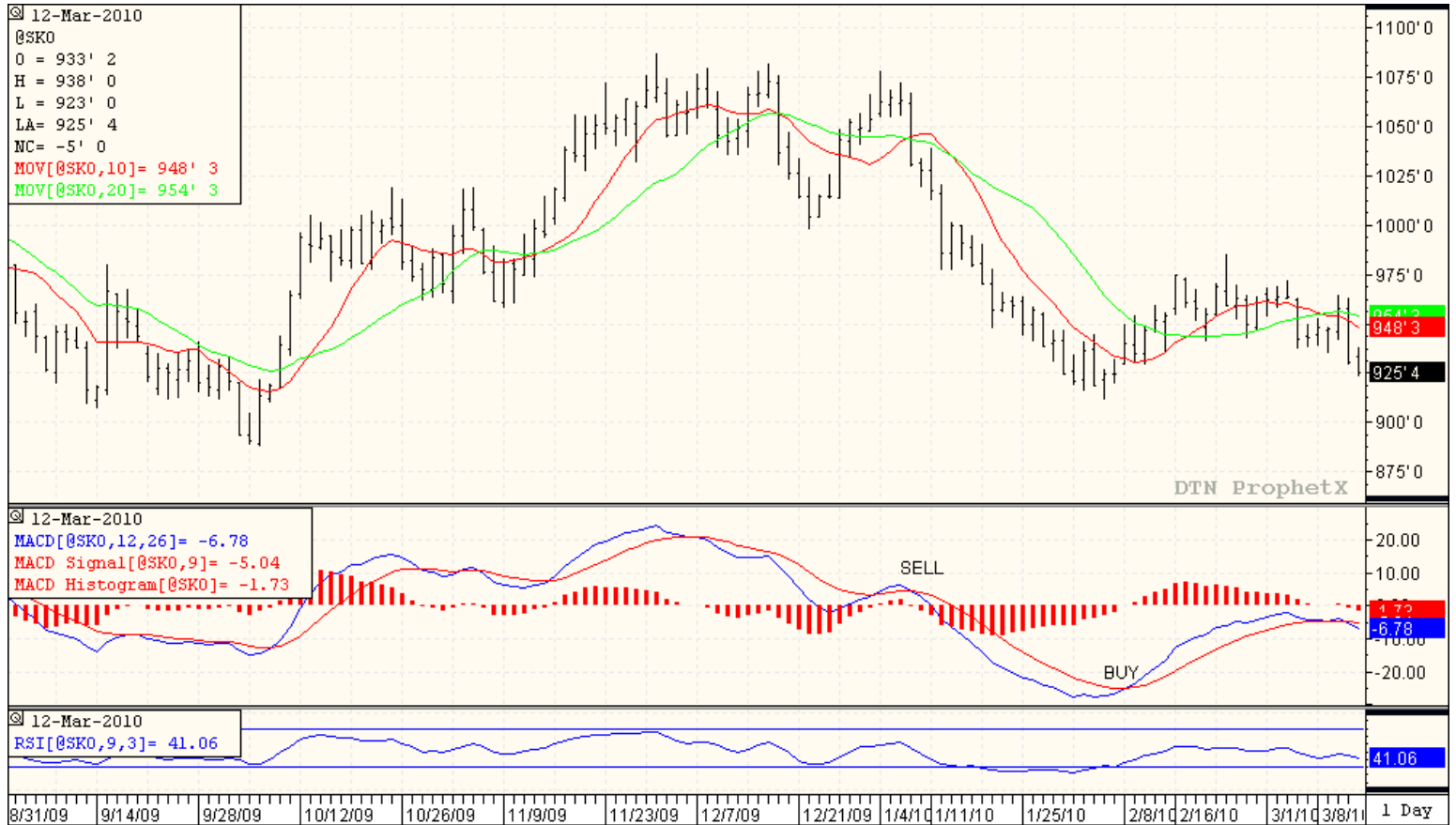
MAY 3.60 PUT



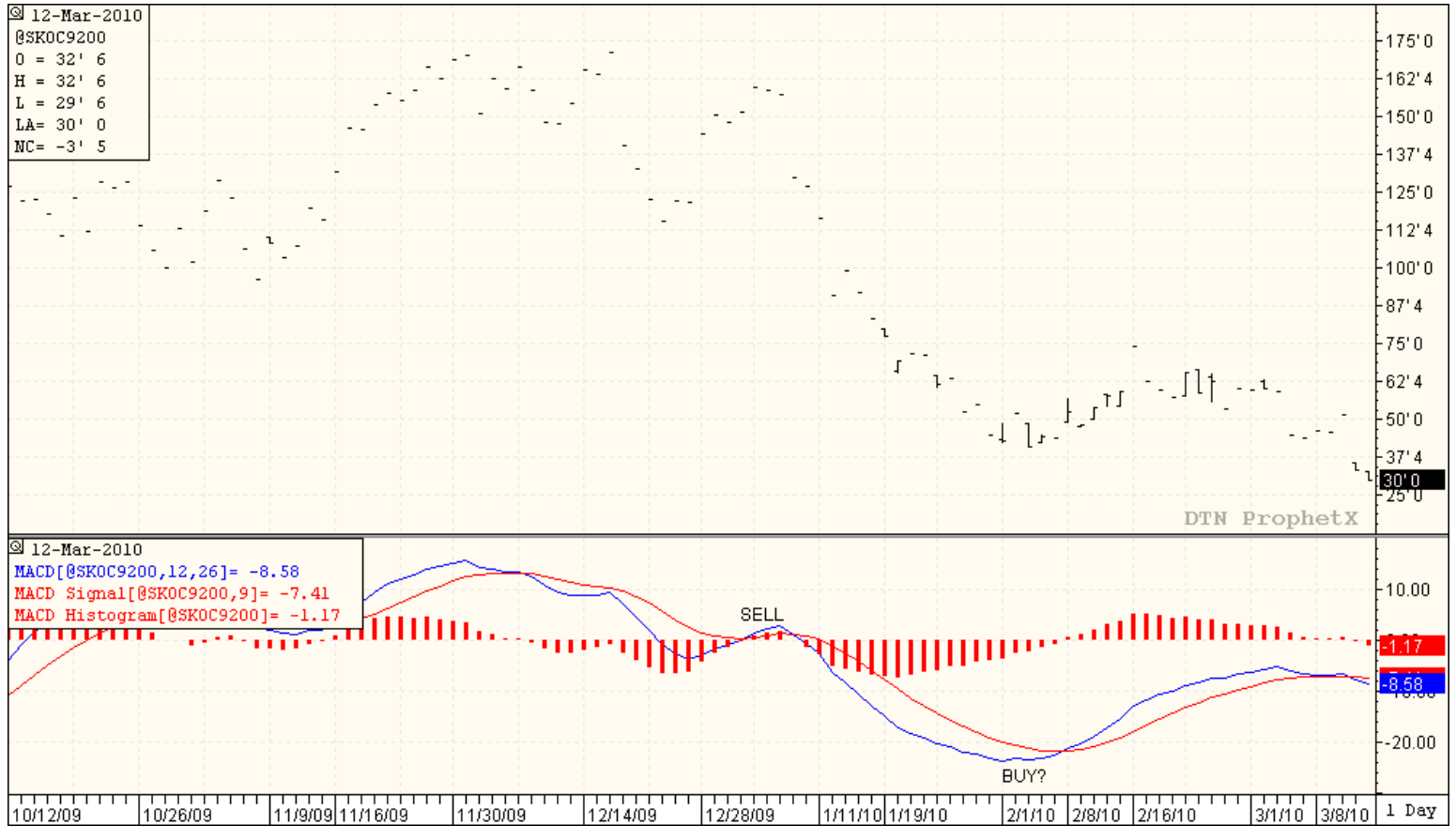
3.60 CALL



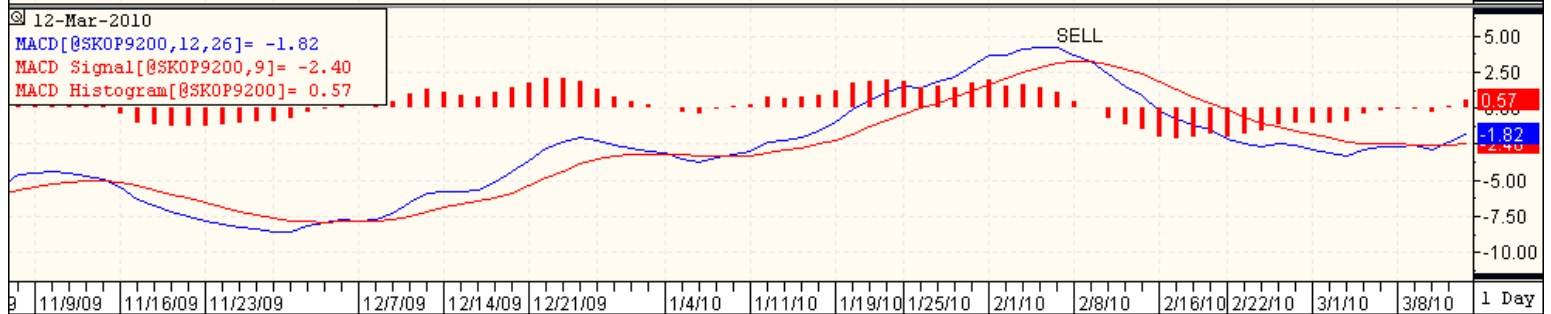
MAY BEANS



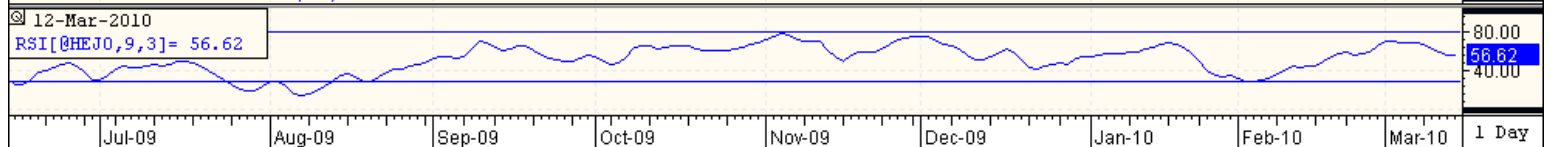
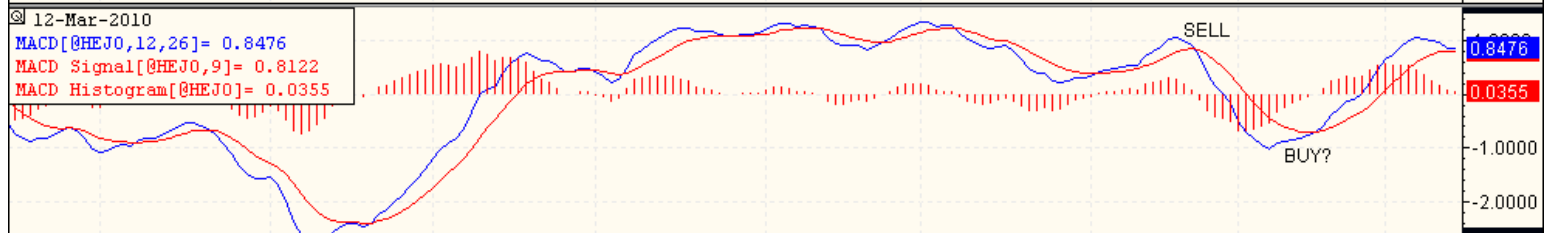
MAY 9.20 CALL



MAY 9.20 PUT



APRIL HOGS



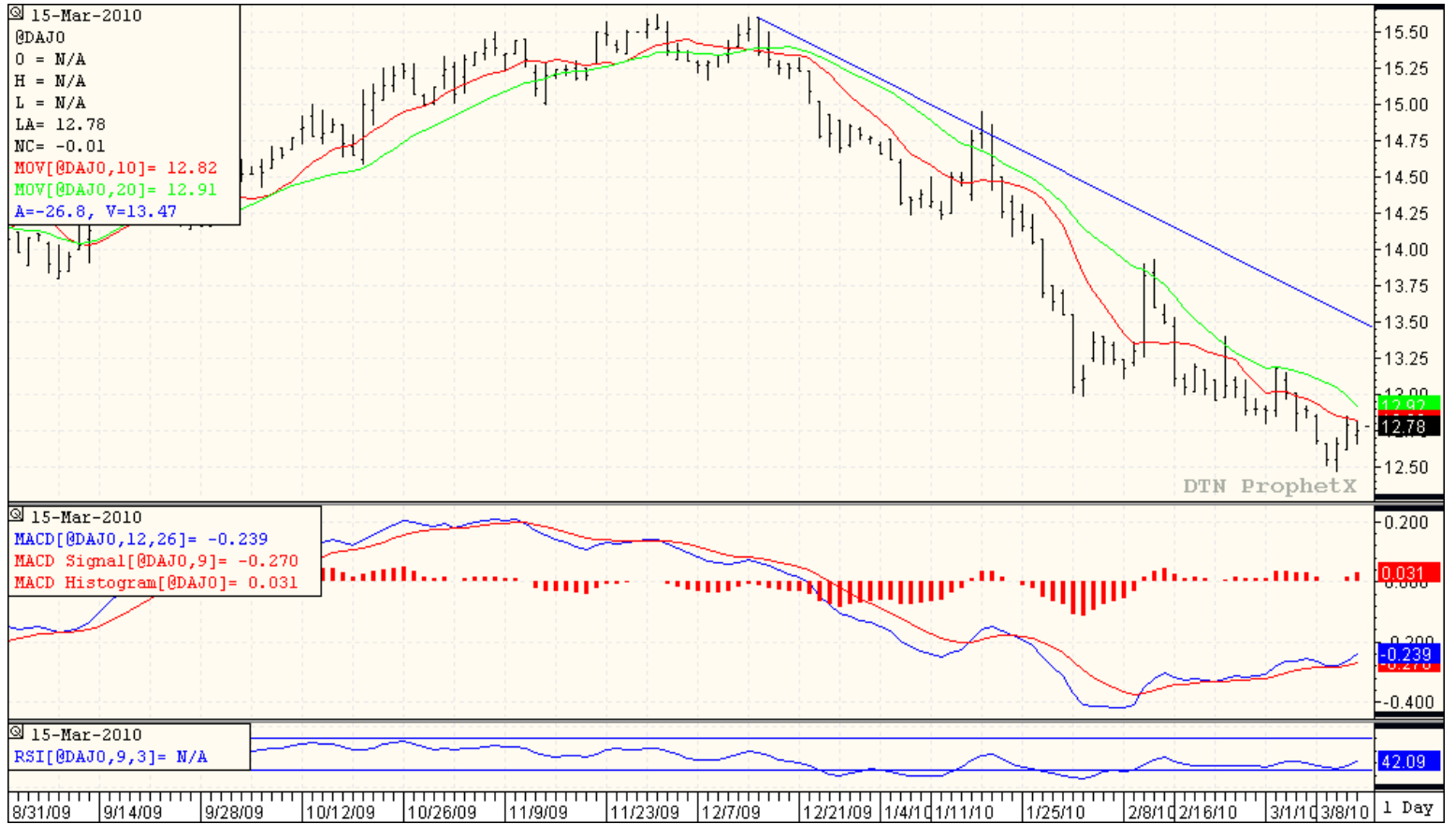
APRIL CATTLE



US DOLLAR



APRIL MILK



15-Mar-2010
 @DAJO
 O = N/A
 H = N/A
 L = N/A
 LA= 12.78
 NC= -0.01
 MOV[@DAJO,10]= 12.82
 MOV[@DAJO,20]= 12.91
 A=-26.8, V=13.47

15-Mar-2010
 MACD[@DAJO,12,26]= -0.239
 MACD Signal[@DAJO,9]= -0.270
 MACD Histogram[@DAJO]= 0.031

15-Mar-2010
 RSI[@DAJO,9,3]= N/A

DTN ProphetX

8/31/09 9/14/09 9/28/09 10/12/09 10/26/09 11/9/09 11/23/09 12/7/09 12/21/09 1/4/10 1/11/10 1/25/10 2/8/10 2/16/10 3/1/10 3/8/10 1 Day